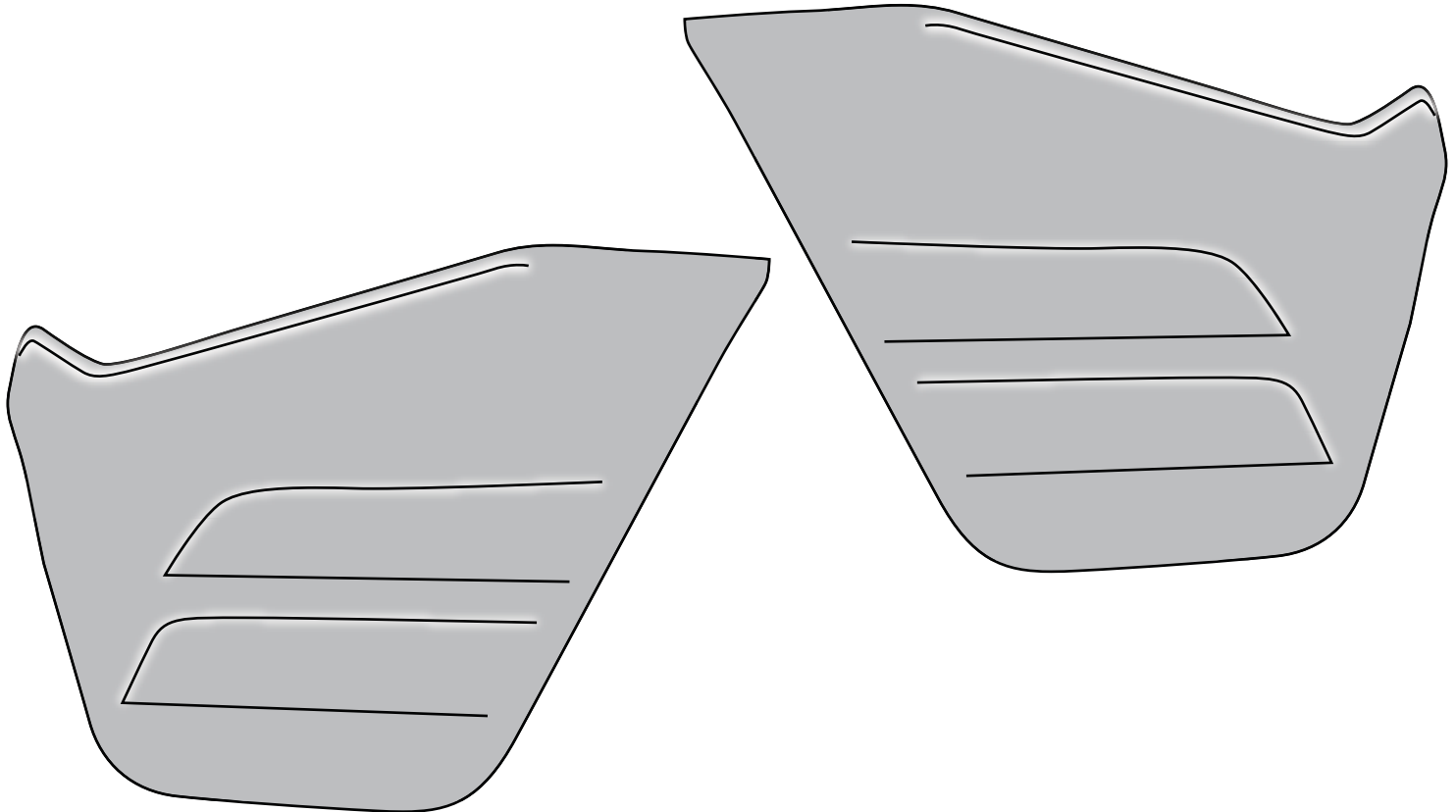




Yamaha RHINO

Door Installation

Part # 45600-01



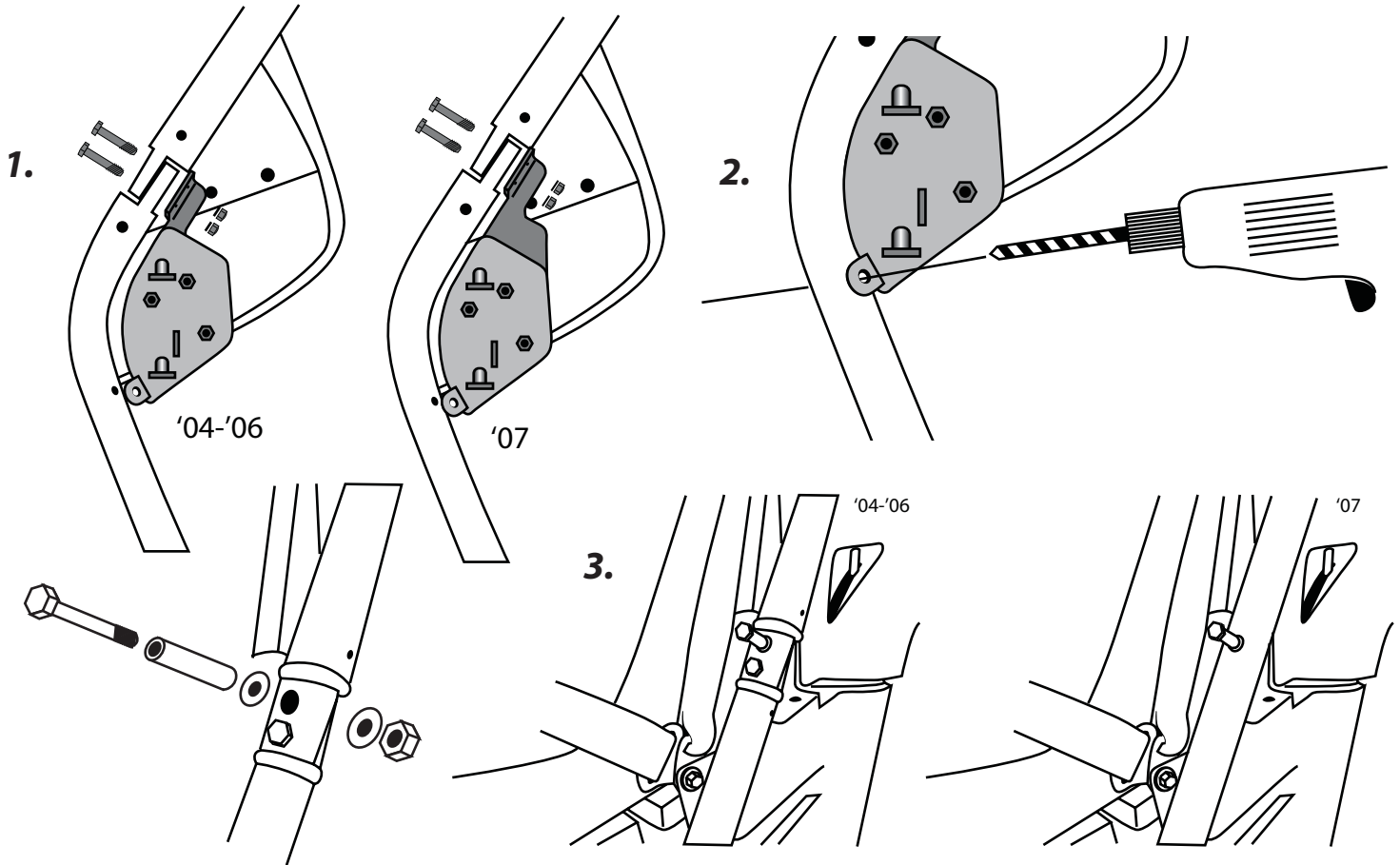
Hardware Included

- (6) 3/8 x 2" Grade 8 Bolts
- (12) 3/8" AN Washers
- (10) 3/8" Nylock Nuts
- (2) 3/8 x 3 1/4" Bolts
- (2) 3/8 x 1 1/4" Stainless Tube
- (2) 3/8 x 1" Button Head Bolts
- (2) 1 1/4 x 2 1/4" Flat Head Bolt
- (2) 1 1/4" Nylock Nut

Tools Required

- Drill Motor
- (3/8) Drill Bit
- (1/4) Drill Bit
- 14mm Wrench & Ratchet
- 9/16" Wrench & Ratchet
- 5/32" Allen Wrench
- 1/2" Ratchet w/ Extension
- 7/16" Combination Wrench

Installation Instructions



1. Open hood to gain access to front cage mount and remove stock mounting bolts.
2. Align hinge and reassemble using two (2) 3/8 x 2" bolts and fasten using a supplied washer and nut. Do not fully tighten at this time.
3. Using the hinge as a guide, drill a 1/4" hole through both sides of the bar (figure 2).
4. Attach and fasten lower hinge using the flat head bolt and nut. Do not fully tighten at this time.
5. Remove belt mounting bolt and replace with Button Head Bolt.
6. Remove rear cage bolts (figure 3) and replace using a 3/8 x 2" bolt and washer and fasten using a supplied washer and nut in the lower hole and 3/8 x 3 1/4" with sleeve and washer and fasten with a supplied washer and nut in the top hole. *NOTE: '07 models will need to drill a hole for the latch pin using supplied template.*
7. Grease hinge pins and attach door. *NOTE: The door will fight snug and tight but will loosen up with use.*
8. Align door with latch hinge before tightening all the hinge bolts down.